

CHEETNAA VERMA
“Sublime Spaces”

artdistrict
XIII

August 22 – September 24, 2015

Born in 1981 in Delhi, Chetnaa Verma completed her Bachelor's and Master's degrees in Painting from the College of Art, Delhi.

The core of her art focuses on geometricism and lines reflective of the urban metroscape. Her drawings and paintings, formed by moving points, and their grouping and ungrouping, take on an abstract oeuvre as they are then developed into unified compositions. The concept of her lines is straight and simple and yet balanced in its discourse.

The journey of a moving point, is recorded by the trail it leaves behind, geometrically known as a Line. A point can be considered to be the inception of everything present in nature; therefore a line proves to be an inevitable part of our existence.

Currently her work is moving into a new direction with experimentation in installations with laser lights though it continues to conform to the ethos of her geometrical drawings.

Artist Statement

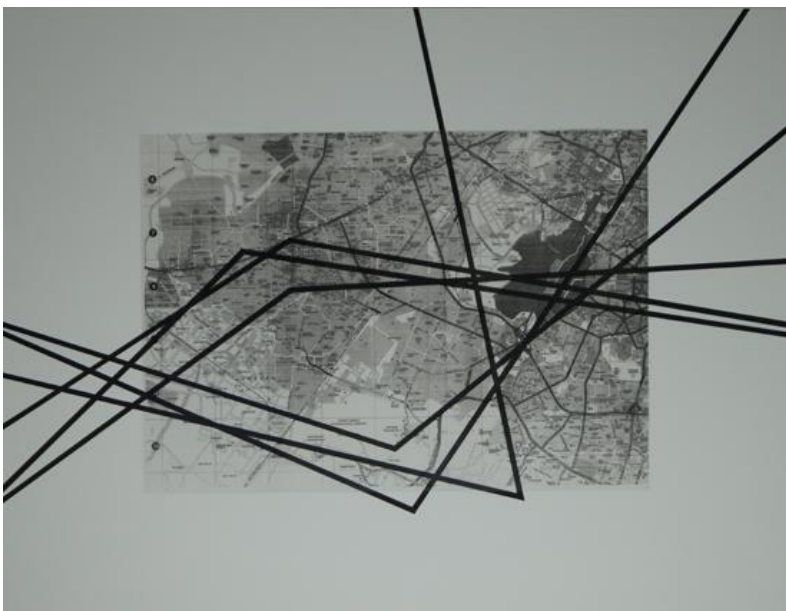
Suspended in the lap of nature, amidst a palette of blues and greens, I set on a journey to create with my art.

My works are essentially a representation of the trails left behind by a moving point, decoding the chaos of the complex grids of urban, concrete existence into a minimalist message.

The countryside provided vast surfaces of nothingness extending miles and miles beyond, till where even the eyes could reach. As I started to experiment with my own surfaces of white, I decided to divide my work into equal parts to represent the main ethos of my endless enclosure, to represent the simplicity of the surroundings, to personify its calm, its complacency even amongst nothingness.

From here emerged a series of my drawings that explored elementary forms that either represented or dissected form into uncomplicated yet well balanced compositions. Playing with the contours of whites and blacks or just white on white with a hint of pure gold, I conceptualised a series of 51 drawings titled 'Blanc et noir d'or' to come together as one work. As I progressed with my drawings, I started using the grid like structure of the distilleries' own surface map to form an underlying essence of my uncluttered compositions. The archival maps of the town and that of the distillery, acted as a starting point of adding a new direction to my works. This was perhaps the first time I worked with photographs and prints that somehow easily blended with the rest of my drawings and became an essential part of them.

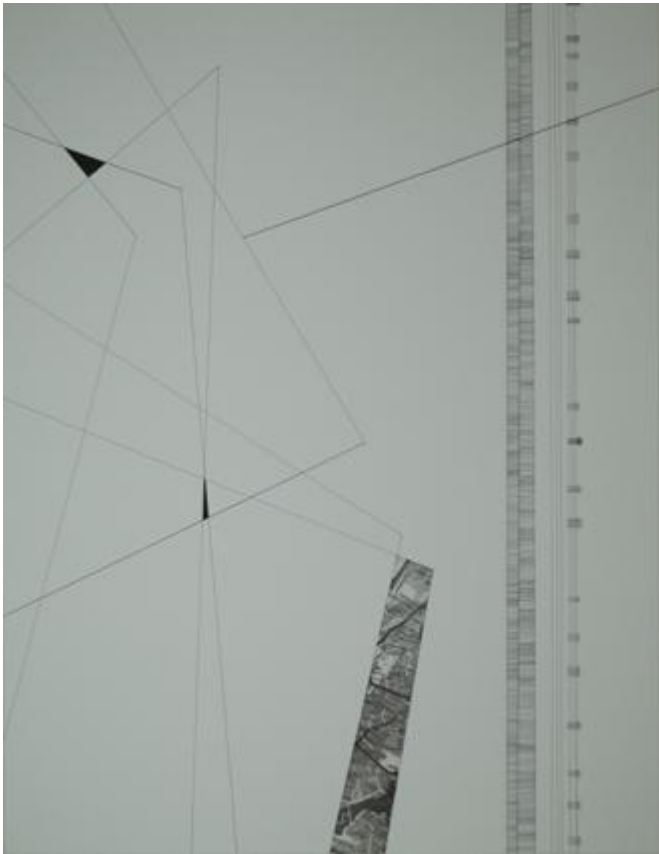
Chetnaa Verma



Linear Overlay 1, 2015
Pen and ink on paper
20" x 26" (51 x 66 cms)
Rs.

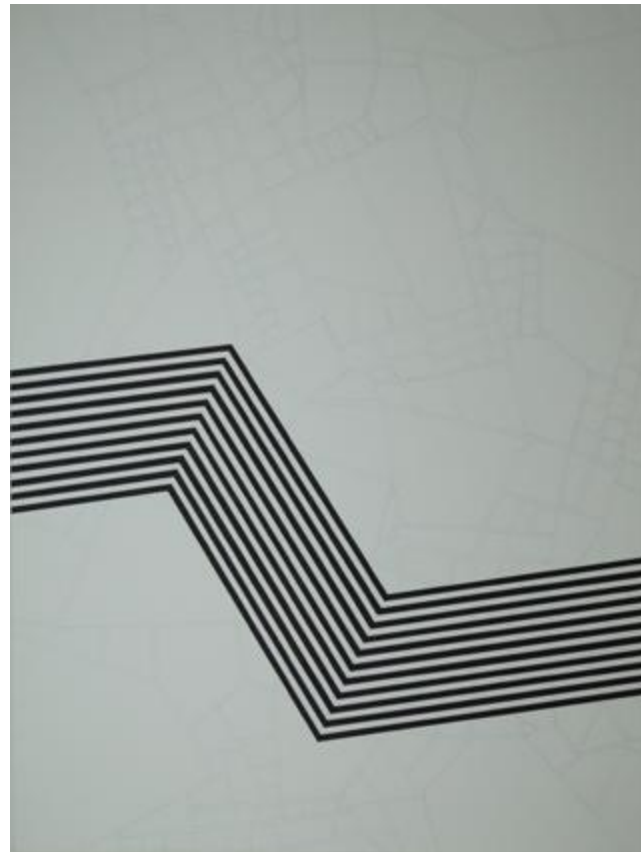


Crossways, 2015
Pen, ink and 22 carat gold on paper
20" x 65" (51 x 66 cms)
Rs.



Linear Ambit, 2015

Pen, ink 7 mixed media on paper
26' x 20" (66 x 51 cms)
Rs.



Linear Pathways, 2015

Pen and ink on paper
26" x 20" (66 x 51 cms)
Rs.



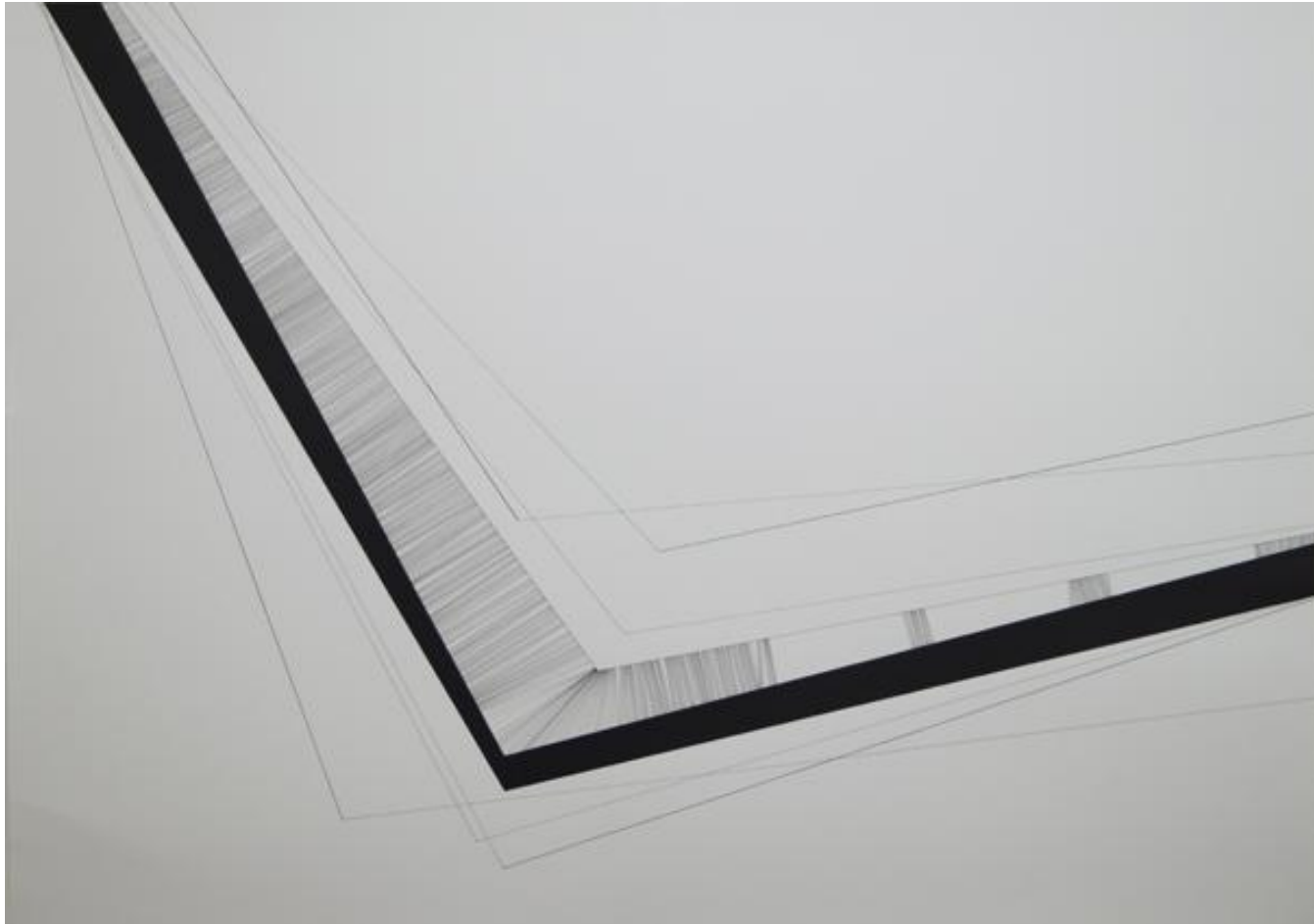
Noir et or, 2015

Pen, ink and 22 carat gold on paper
26" x 20" (66 x 51 cms)
Rs.



Diagonally vertical, 2015

Pen and ink on paper
41" x 30" (104 x 76 cms)
Rs.



Cacophony of Lines II, 2010

Pen and ink on paper
30" x 41" (104 x 76 cms)
Rs.



Crossways of Diagonals ii, 2015

Acrylic on canvas

48" x 48" (122 x 122 cms)

Rs.

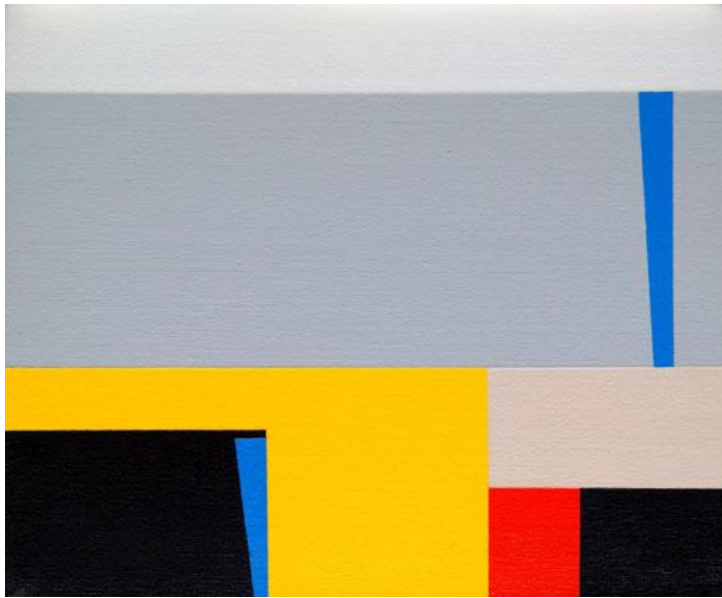


Journeys of Straight Line, 2015

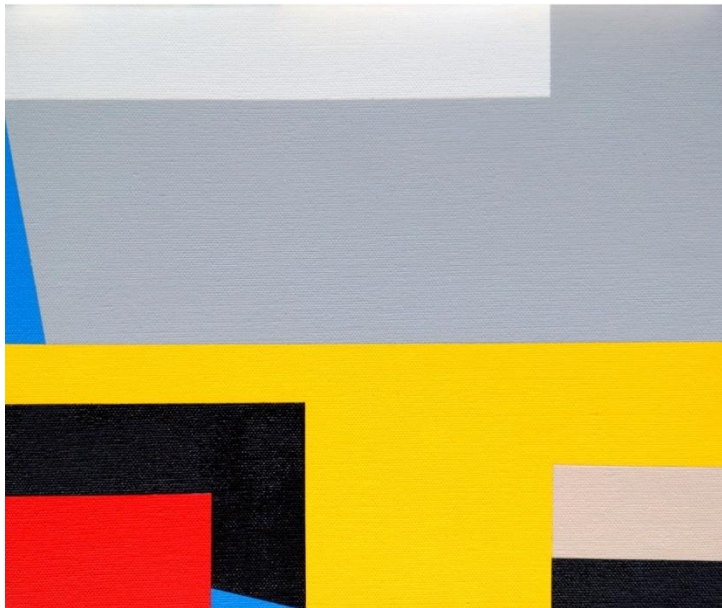
Acrylic on canvas

48" x 48" (122 x 122 cms)

Rs.



Untitled i, 2014
Acrylic on canvas
10" x 12" (25 x 30 cms)
Rs.



Untitled li, 2014
Acrylic on canvas
10" x 12" (25 x 30 cms)
Rs.



Blanc et noir d'or , 2014
Pen and ink on paper, set of 51
8" x 8" (20 x 20 cms) each
Rs.



One way , 2015
Photographic print on 308 gsm
Hahnemuhle photo rag paper
10" x 10" (25 x 25 cms)
Rs.



Follow the Trial, 2015
Photographic print on 308 gsm
Hahnemuhle photo rag paper
10" x 10" (25 x 25 cms)
Rs.



Stage Crossing, 2015
Photographic print on 308 gsm
Hahnemuhle photo rag paper
10" x 10" (25 x 25 cms)
Rs.
/-



Site Under Construction, 2015
Photographic print on 308 gsm
Hahnemuhle photo rag paper
10" x 10" (25 x 25 cms)
Rs.



Turn Prohibited, 2015
Photographic print on 308 gsm
Hahnemuhle photo rag paper
10" x 10" (25 x 25 cms)
Rs.



Block by Block, 2015
Paper on paper
10" x 10" (25 x 25 cms)
Rs.



Carre en carres, 2015
Paper on paper
10" x 10" (25 x 25 cms)
Rs.

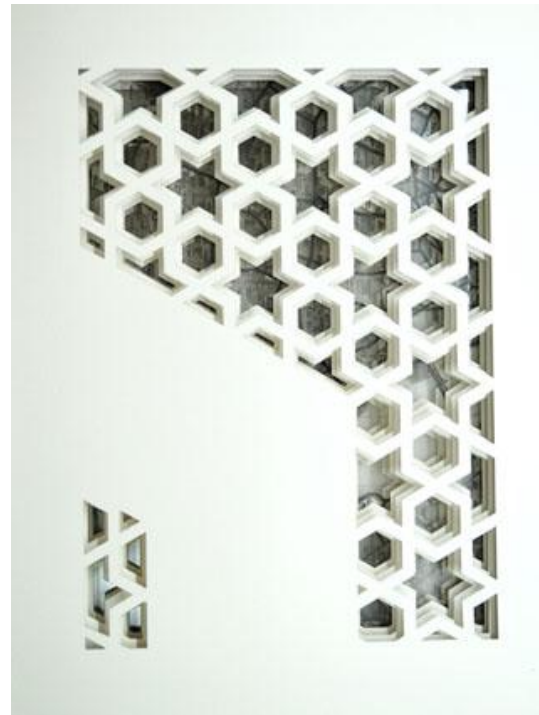


Feuetres, 2015
Paper on paper
16" x 12" (41 x 30 cms)
Rs.

“



Diagonal, vertical & Horizontal, 2015
Paper on paper
10" x 10" (25 x 25 cms)
Rs.



Of Light & Shadows II 2015
Paper on paper
18" x 14" (46 x 36 cms)
Rs.

CURRICULUM VITAE

CHETNA VERMA

Born 1981

Education

B.F.A (Painting) from Amity School of Fine Arts, Noida , 2004 – 2008

M.F.A (Painting), College of Art, New Delhi, 2009 – 2011

Art Appreciation, National Museum of India, 2010 – 2011

Group Shows

2015

Forms of Devotion: Spiritual in Indian Art, Celebrating 60th Birthday of the Thai Princess, Chulalongkorn University, Thailand

Forms of Devotion: Spiritual in Indian Art, Lalit Kala Akademi, New Delhi

Vama, Showcasing Women Artists from Delhi, IGNCA, New Delhi, by Sahitya Kala Parishad

Grounded, Group Show, Garden of Five Senses, New Delhi

Forms of Devotion: Spiritual in Indian Art, India Art Fair, New Delhi

2014

Artists at Glenfiddich 2014, Third Show, Group Show, Glenfiddich Distillery, Scotland

Artists at Glenfiddich 2014, Second Show, Group Show, Glenfiddich Distillery, Scotland

'Five for the Future', Group Show, Nature Morte, The Oberoi, Gurgaon

3rd Annual All India Women Artists' Contemporary Art Exhibition, Artscares, Chandigarh

'NIV Saturday the Last', Group Show, Niv Art Centre, New Delhi

2013

'In the Colors of India', Group Show, J. Bastien Art Gallery, Brussels, Belgium

2012

1st United Art Fair, New Delhi

Small Format Show, Art Indus, New Delhi



2011

'New Horizons', Dhoomimal Art Gallery, New Delhi

58th Annual Art Exhibition', College of Arts, New Delhi

Face India International Humanism Recovery Festival 2011, AIFACS, New Delhi

2010

'Art Affair 2010', Group Show, Garden Gallery, Triveni Kala Sangam, New Delhi

'Delhi Movement - 2010', Group Show, Rabindra Bhavan, Lalit Kala Academy, New Delhi

'Summer Breezer', Group Show, IHC, New Delhi

'57th Annual Art Exhibition' College of Arts, New Delhi

2009

Group Show, Epicentre, Gurgaon

Group Show, IHC, New Delhi

2007

Group Show, Arpana Caur Gallery, New Delhi

Annual Exhibition, Delhi Blue Pottery, Sanskriti Kala Kendra, New Delhi

2006

'SRIJAN' , Amity School of Fine Arts, Noida

2005

'SRIJAN' , Arpana Caur Gallery, New Delhi

Installations

2014

'Light & Dark', Installation with **Light & Wood**, Glenfiddich Distillery, Scotland

'The Trails of a Moving - Point', **Laser Light Installation**, Niv Art Centre, New Delhi

2013

'Lines in my way' , **Laser Light Installation**, Multimedia Art Workshop, Chandigarh Lalit Kala Academy

2012

'Spatial Exploration', **Video Installation**, **4th India Art Fair**, New Delhi

'Spatial Exploration', **Laser Light Installation**, 1st United Art Fair, New Delhi

'Sky is my Canvas & I paint with Light', **Laser Light Installation**, Hungarian National Day, Hungarian Embassy,
New Delhi

Awards

'**Emerging Artist of the Year 2014**' presented by Glendfiddich and Best College Art

Award for Drawing, **Annual All India Art Exhibition 2011, AIFACS**, New Delhi

Ranked First IN 2008 by Amity School of Fine Arts, Noida

'Sanjay Bhattacharya Award' 2006 for Excellence in Painting, Amity School of Fine Arts, Noida

Works in collection

College of Art, New Delhi

Ghaziabad Development Authority, U.P

Museum of Sacred Arts, Belgium

The Glenfiddich Distillery, Scotland

ITM University, Gwalior

ATS Infrastructures

Art District XIII is India's new dynamic art space located in Lado Sarai, New Delhi. Spread across 2300 square feet of eclectic gallery space. The emergence of **Art District XIII** resonates from Indian art demanding transparency in dealing, both with the artist and the collector, with a platform for the collector and the artist to meet, learn and grow together.

Art District XIII celebrates the espousal of the numeric **XIII**, considered inauspicious by some but very auspicious by the initiators of the gallery, also opening in the summer rather than an opening in the traditional winter months, thereby challenging the paradigm.

With an aim to support exceptional artists who show the potential to have a global career and art which can be embraced by both established and upcoming collectors, the gallery will strive to ensure that collectors get value. **Art District XIII** strongly holds back from showing artists who are transactional in their approach, similarly also ensuring that artists are guided and shown on International platforms.

Fundamentally **Art District XIII** has been conceptualised to encourage people to embrace art in a gallery space which is diverse and will show art beyond the ordinary. **Art District XIII** believes that profit is not the motive but art is - both the artist and the collector will stand to gain from a gallery that promises to transform the Indian art landscape.

Kapil Chopra, Mentor Art District XIII and President The Oberoi Group: “**Art District XIII**’s presence in the world of art aims at showing art beyond the ordinary. Where art is universal in its outlook and yet not out of bounds for an influential collector. It is an initiative that would put Indian art on the global map. Conceptualised by art collectors and mentored by leading artists and curators, **Art District XIII** invites you to an International experience in the heart of New Delhi.



Art District XIII

F- 2 13C, Ground Floor. Lado Sarai.
New Delhi-110030
rajeev@artdistrict13.com
Cellular no. +91 95605 05946

Open Monday to Saturday
10am to 6pm

